



EVENT DESK

Office: +971 4 245 2400

Mobile : +971 54 584 3614

Email: events@reyamirental.com

OFFICE ADDRESS

Dubai Industrial City, Dubai
Mussaffah, Abu Dhabi, UAE



**MEMORABLE EVENTS
TRUSTED RENTALS**

reyamirental.com





About Us

At Reyami Rental, We're proud to be the UAE's leading equipment rental provider, serving customers across the country since 2004. We offer a wide range of high quality products.

We specialize in providing top-quality equipment and exceptional customer service for all types of events. Whether you're planning a wedding, corporate event, or outdoor festival, we have the equipment you need to make your event a success. We offer a wide variety of rental options, including generators, HVAC units, and portable cabins. Our equipment is regularly maintained and inspected to ensure that it is in top working condition, so you can have peace of mind knowing that you're renting quality equipment that is safe and reliable.

Our Product Range

- Production Office
- Green Room
- Sales/Food Outlet Counter
- Ticket Booth
- Kitchen Container
- Washing unit
- Prayer and Ablution (Wudu)
- Hand Wash Unit
- Portaloo
- Standard Ablution
- Premium Ablution
- Premium Shower
- VIP Ablution
- VVIP Ablution
- Special Needs Ablution (POD)
- Temporary Power and Accessories
- Light Tower
- HVAC
- Barrier, Fence
- Picnic Bench



Production Office

A fully equipped, 40' x 13' office featuring two rooms and a bathroom. This versatile space is designed to support event management teams, ensuring seamless operations and coordination on-site.

- Air conditioning
- Built-in septic tank
- Portable water tank
- Water heater
- Multiple Power Sockets

Green Room

40' x 13' Temporary luxury private and comfortable space for performers and VIPs, designed to meet backstage relaxation and preparation needs.

- Air conditioning
- Built-in septic tank
- Portable water tank
- Water heater
- Multiple Power Sockets



Sales/ Food Outlet Counter

20' Modular and customizable counters ideal for food stalls or sales booths, offering convenience and quick setup.

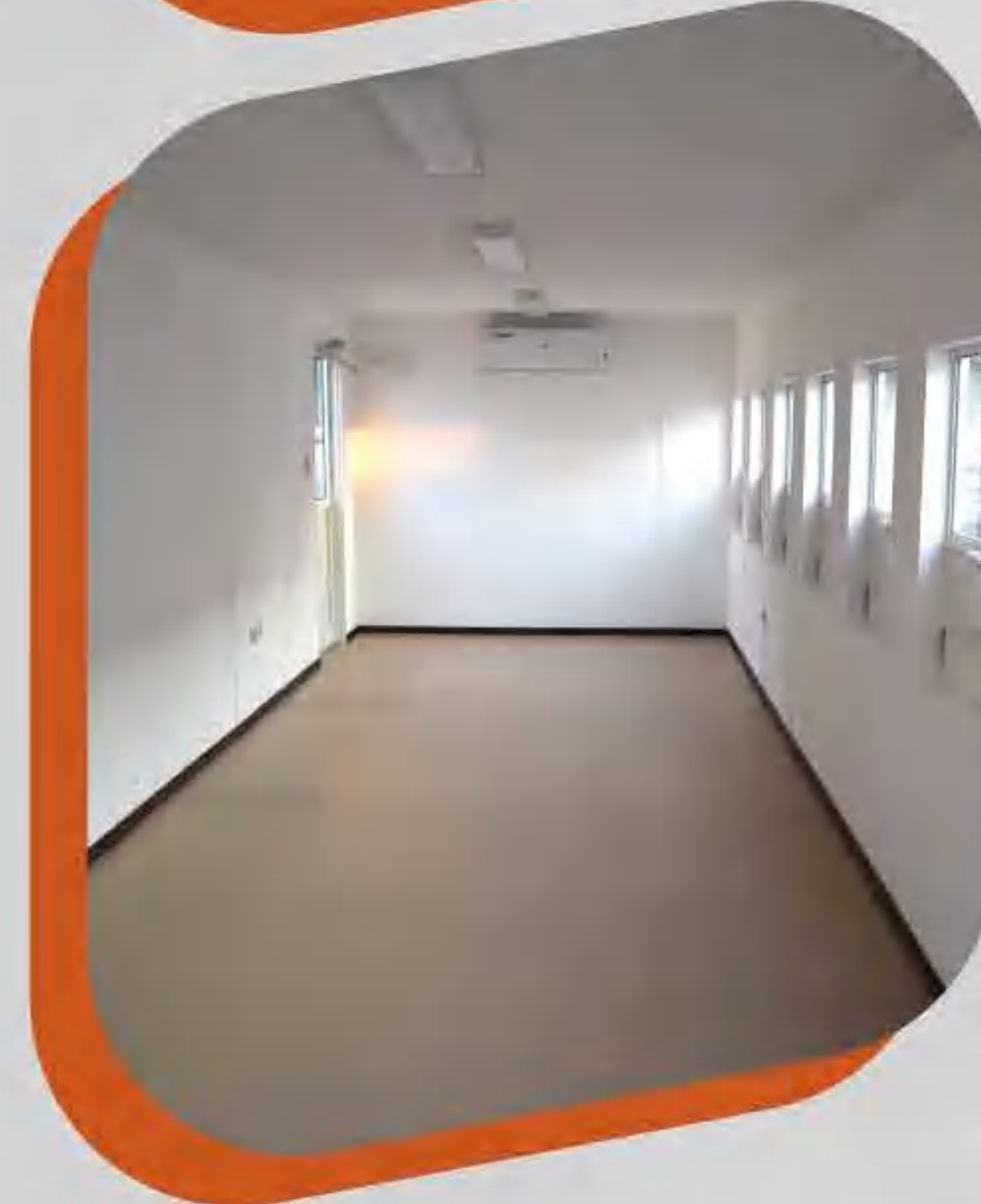
- Air conditioning
- Multiple Power Sockets
- Openable Service Counter



Ticket Booth

Secure and functional ticketing counters, designed for easy customer interaction and efficient event access control. Available in 10', 20' and 40' sizes to suit different event requirements.

- > Air conditioning
- > Multiple Power Sockets
- > Openable Service Counter/window





Kitchen Container

A mobile kitchen container suitable for event catering or food preparation in remote locations. Available in 20' and 40' sizes to suit different event requirements.

- Air conditioning
- Built-in septic tank
- Portable water tank
- Water heater
- Exhaust hood





Washing Unit

Convenient and portable washing stations, ideal for event catering needs, including the cleaning of pots and utensils.

- Portable water tank
- Portable waste tank
- Steel kitchen sink





Prayer and Ablution (Wudu)

Portable and comfortable prayer spaces with dedicated ablution (wudu) facilities, providing a clean and convenient solution for religious practices at events or remote locations.

- Portable water tank
- Portable waste tank
- Floor carpet
- Air conditioning (prayer room)





Hand Wash Unit

Compact and portable hand wash stations designed to maintain hygiene standards at events

- Portable water tank
- Portable waste tank



Portaloo

Ideal for large-scale sports events and providing convenient sanitation for buildup crews..etc

- Built-in Chemical Flush System
- Built-in Freshwater Tank

Standard Ablution

Designed for public use, offering flexible configurations with separate male and female amenities, or dedicated all-male and all-female units, ensuring convenience and hygiene for large event crowds. Available in 10', 20' and 40' sizes

- > Air conditioning
- > Built-in septic tank
- > Portable water tank



Premium Ablution

Upgraded ablution units featuring enhanced amenities for extra comfort and an elegant design. Available in 10', 20' and 40' sizes.

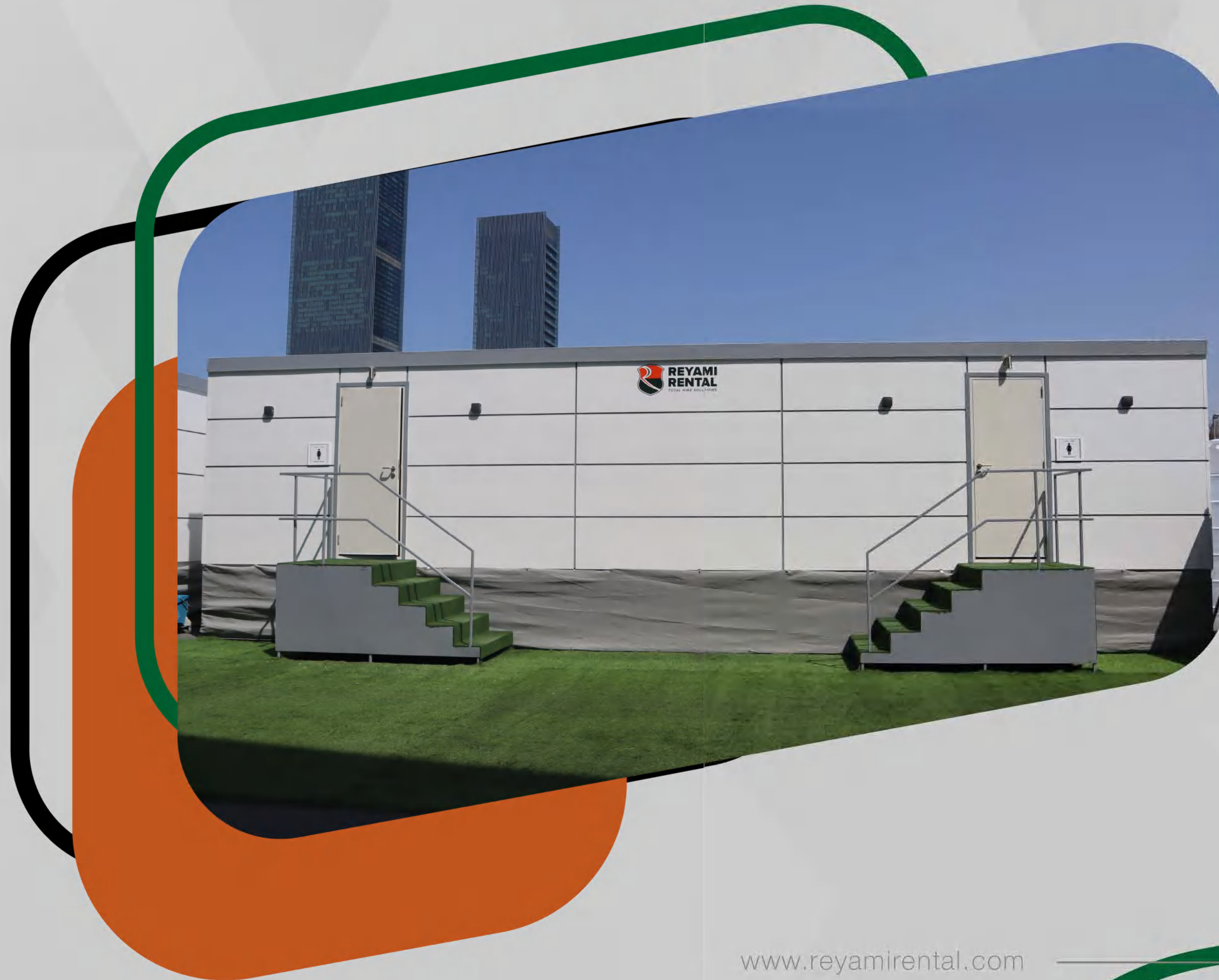
- > Air conditioning
- > Built-in septic tank
- > Portable water tank



Premium Ablution

Upgraded ablution units featuring enhanced amenities for extra comfort and an elegant design. Available in 10', 20' and 40' sizes.

- > Air conditioning
- > Built-in septic tank
- > Portable water tank



Premium Shower

Luxury shower cabins offering hot/cold water, ensuring a comfortable and refreshing experience.

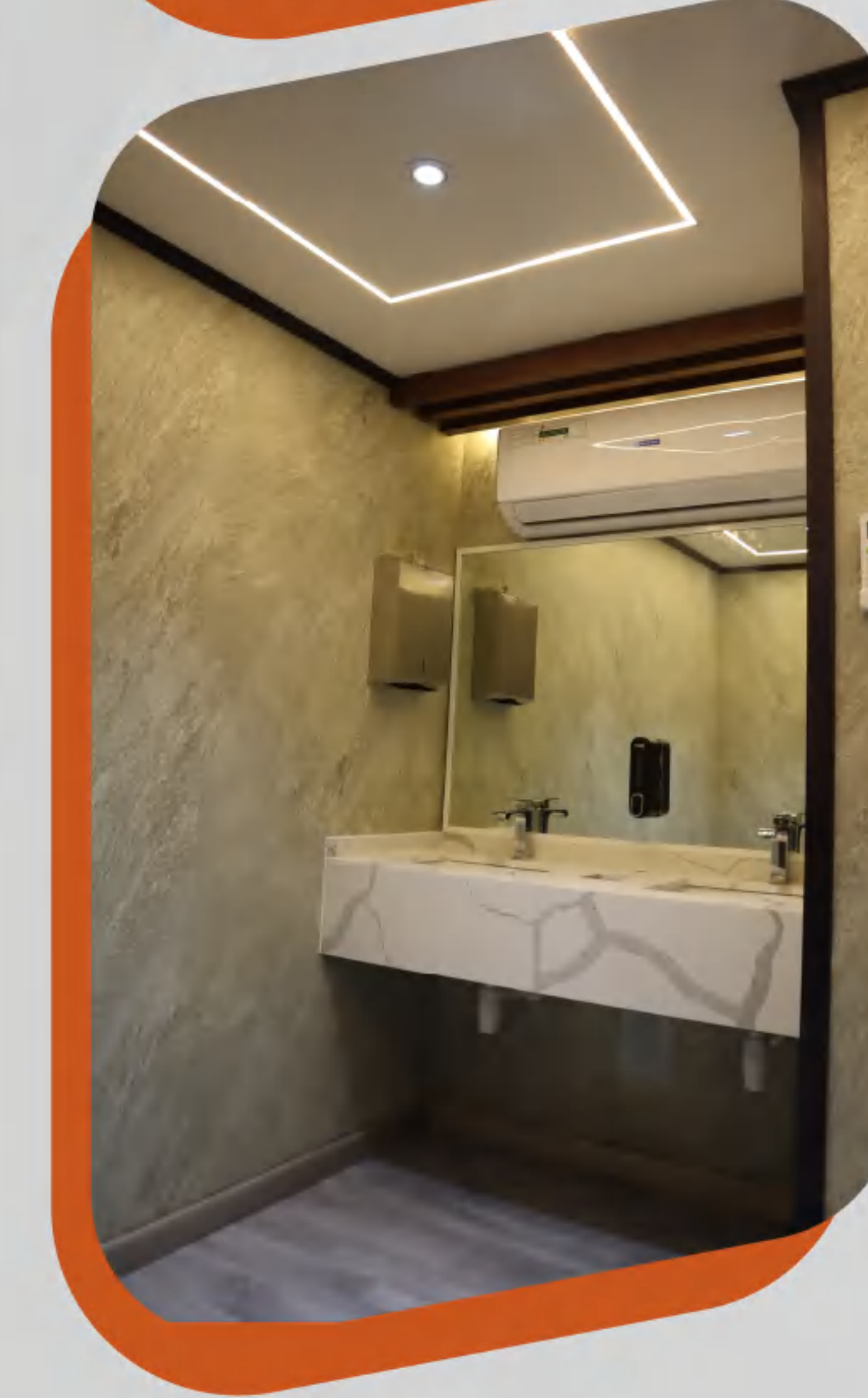
- Air conditioning
- Built-in septic tank
- Portable water tank
- Water heater



VIP Ablution

High-end ablution facilities with luxurious finishes, designed for exclusive VIP attendees.

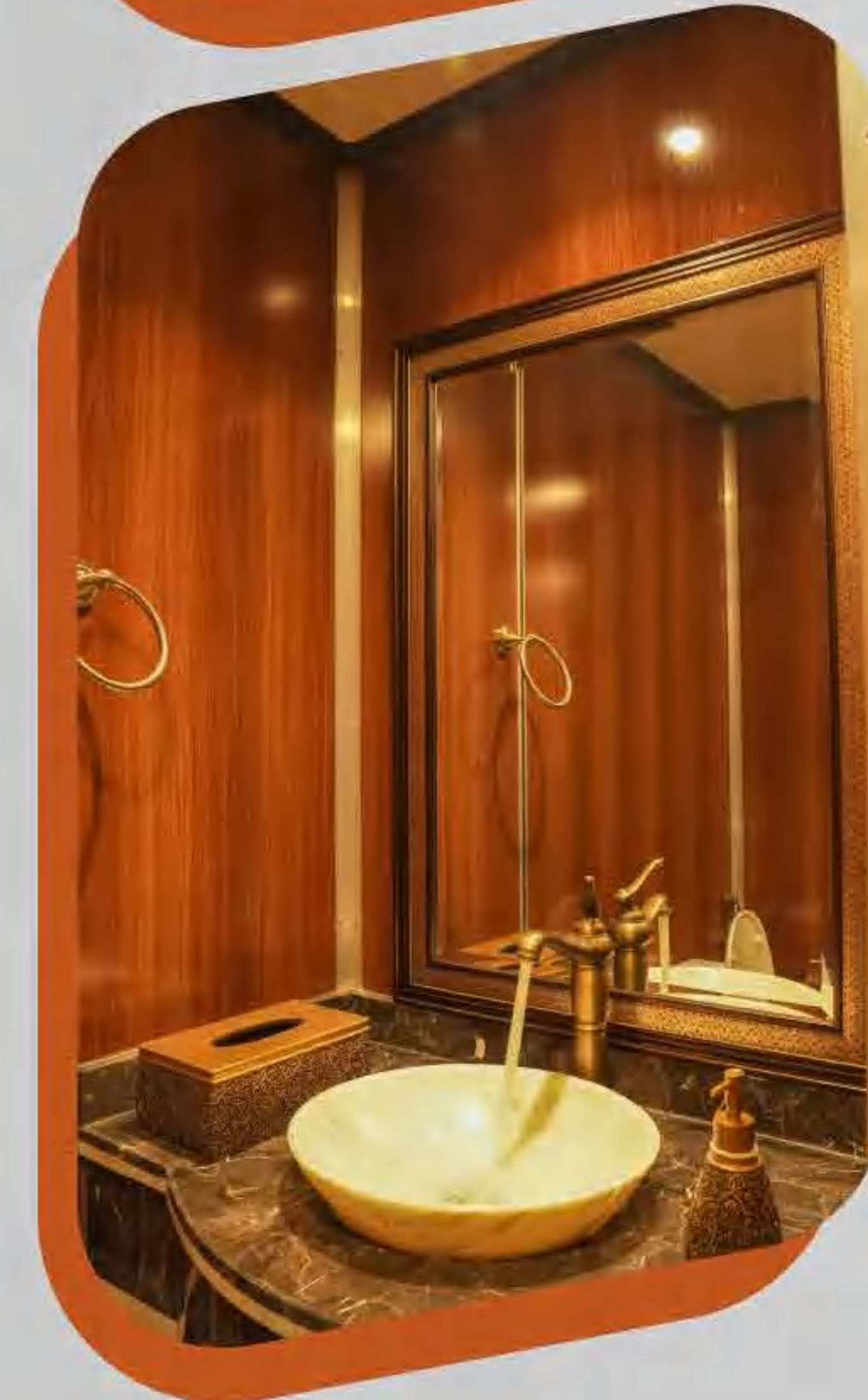
- > Air conditioning
- > Built-in septic tank
- > Portable water tank
- > LED Light



VVIP Ablution

Ultra-luxurious ablution units for the most prestigious guests, offering privacy and premium amenities.

- > Air conditioning
- > Built-in septic tank
- > Portable water tank
- > Rest Area
- > LED Light





Special Needs Ablution (POD)

Accessible ablution units designed to meet the needs of individuals with disabilities, ensuring inclusivity at events.

- > Air conditioning
- > Built-in septic tank
- > Portable water tank
- > Wheelchair Accessibility
- > Spacious Interior



Temporary Power and Accessories

Reliable and scalable temporary power solutions to keep your event running smoothly. Includes synchronized generators and essential accessories such as DB, Flexible primary and secondary power cable (with industrial and power lock socket)





Light Tower

Mobile lighting towers to illuminate event spaces, ensuring safety and visibility in outdoor or large areas.

HVAC

Efficient climate control solutions to maintain comfort at any event, regardless of the season or venue.

- Evaporative Air cooler
- Portable and Freestanding AC
- Package AC





Barrier, Fence and Picnic Bench

Event essentials for crowd control and outdoor seating, providing practical solutions for event flow and attendee comfort.

- Fence Size : Width 3.5 x Height 2mtr (optional shade cover net)
- Barrier Size: Width 2.5m x Height 1.1mtr



Our Projects

